



Autism  
Assistance  
Dogs  
Ireland

# welcome!

INFORMATION FOR POTENTIAL  
NEW PUPPY FOSTERERS



# WHAT IS THE ROLE OF A VOLUNTEER PUPPY FOSTERER?

- Our special puppies are cared for by volunteers in their homes from the age of 8 weeks to approximately 15 months old
- Our dedicated volunteers ensure the puppy has a good foundation before it starts its formal training
- You must have the time, commitment and be physically able to provide basic obedience training, socialisation and appropriate exercise required for a young puppy.



# WHAT IS EXPECTED OF YOU

## Your home must have...

- A fully enclosed garden or be prepared to have your puppy on lead for toileting if your garden is not fully secure.
- A safe & quiet space indoors for the puppy to rest.

## You and your family must...

- Have someone at home everyday - ensuring you are away from the puppy no more than 2 hours a day
- Provide your puppy with lots of walks and enrichment and be flexible with time.
- Any children within the home should be over two years old



# WHAT IS EXPECTED OF YOU

## When training your pup...

- With the support of your Puppy Supervisor provide ongoing basic obedience along with a gradual introduction to new environments, using only positive training techniques - we want the puppy's experience to be enjoyable.
- Adhere to advice and carry out any instructions given by your Puppy Supervisor keeping them updated regularly on the progress of the dog
- Maintain health and welfare of the puppy in accordance with our guidelines



## IT'S LIKE HAVING A TODDLER...

- Please be aware that these puppies are in training, they are not FULLY TRAINED assistance dogs.
- As such they will exhibit all the normal puppy behaviours such as puppy biting, chewing, jumping up, zoomies (short burst of running around madly) and stealing food/socks/toys.
- You might need to sleep downstairs with them the first night as they may be upset after the move.
- It can take a number of days for the puppy to adjust to their new home - please give them time to settle and keep things quiet for the first couple of days.



# FAMILY CONSIDERATIONS

- **Other pets:** It can be a big change for your pets to have a puppy in the house. Be prepared to spend some time introducing them correctly.
- **Children:** The puppies can be boisterous and excitable after they move. Puppies can sometimes jump up, exhibit puppy biting and chewing which can be difficult to manage with young children.
- **Workload:** It is tough to balance a busy family life and fostering a puppy.
- **Cleanliness:** Your foster puppy will walk in mud and shed hair in your home which means more housework and washing.



## SAMPLE SCHEDULE OF A TYPICAL DAY

7:00am: Spending (Urination)

7:15am: Breakfast

7:30am: Spending (bowel movement) - has to be supervised

AM: trip in the car (maybe the school run)

AM: short walk

DURING THE DAY: bring puppy out for toilet breaks and play with the puppy. Also give the puppy time to nap/relax.

PM: short walk - home from school or alternative walk in locality

PM: Play session in the garden or a free run (off leash)

5:00pm: Dinner

5:30pm: Spending (bowel movement) - has to be supervised

Evening: Relax with family

10:30-11pm: Last bathroom break before bed



# WHAT TO EXPECT FROM US

- Your local puppy supervisor is here to support you and wants you to enjoy your time with the puppy.
- Costs are covered - Vet bills, equipment, toys, feed, etc.
- We will equip you with the knowledge and tools you need (no dog training experience required), you will learn lots!
- You will have access to information on our online learning platform.
- The puppy will arrive with everything it will need for its stay with you (bed, lead, waterbowl, toys, crate etc)



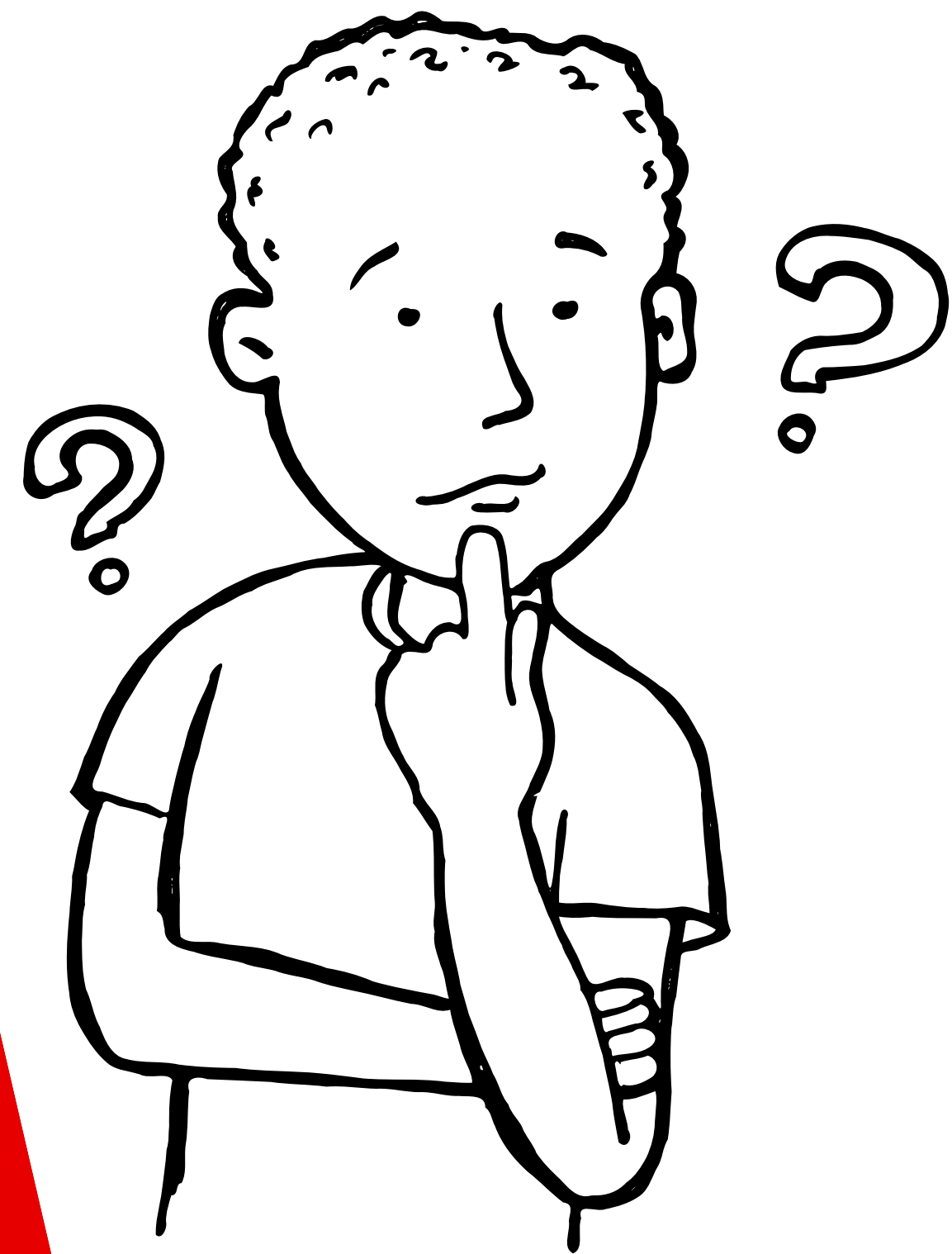


# WHAT YOU WILL GAIN FROM VOLUNTEERING IN THIS ROLE:

- The satisfaction of knowing you have played an important role in a life changing service
- Learning new skills to gain a better understanding of dog training
- The opportunity to be part of a team and meet new people



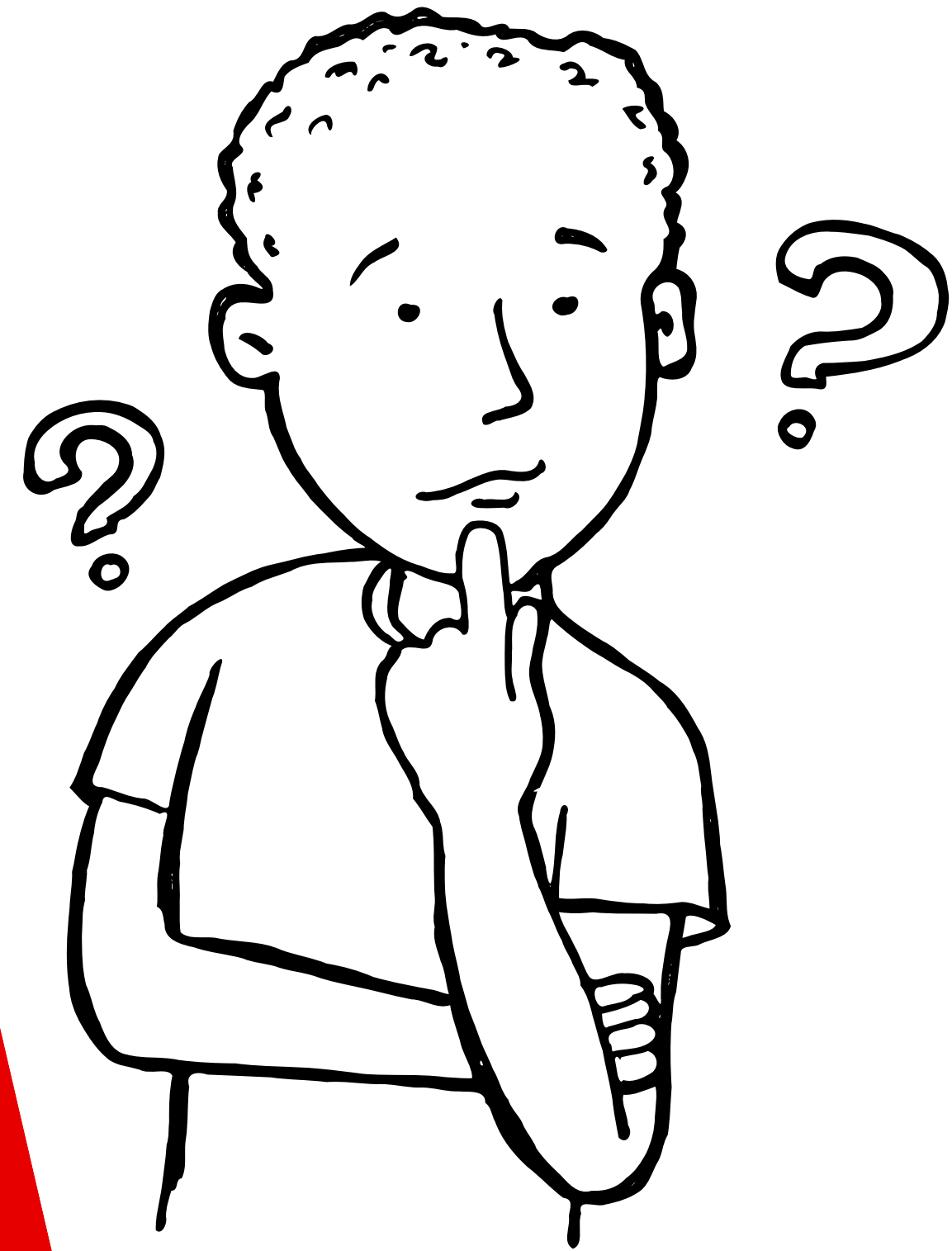
# Q & A



Autism  
Assistance  
Dogs  
Ireland

# WE LIVE IN AN APARTMENT. IS THAT A PROBLEM?

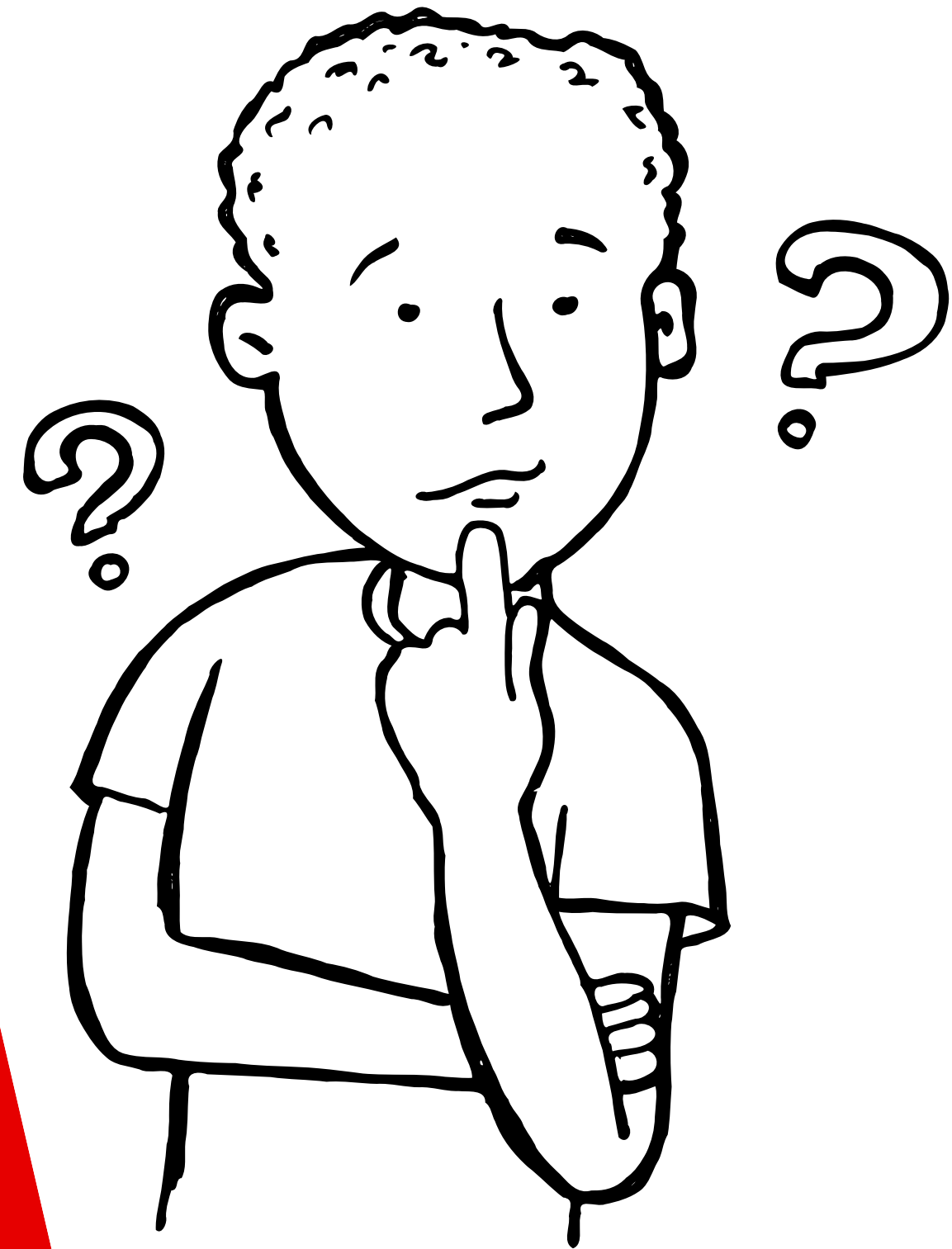
- Ideally you need a safe, enclosed garden. However, an apartment might be acceptable as long as the management company allow for dogs and you have written permission from your landlord (if renting). We will look at all factors at the time of assessment.



Autism  
Assistance  
Dogs  
Ireland

# I HAVE ANOTHER PET. CAN I STILL FOSTER?

- Your pet should be friendly and well socialised. This does not rule you out from Puppy Fostering, but be aware that if you have a dog, the puppy will have to be walked separately to allow for training walks. All applications will be assessed on a case by case basis.



Autism  
Assistance  
Dogs  
Ireland

# I DON'T HAVE A GARDEN, BUT I LIVE NEAR A PARK?

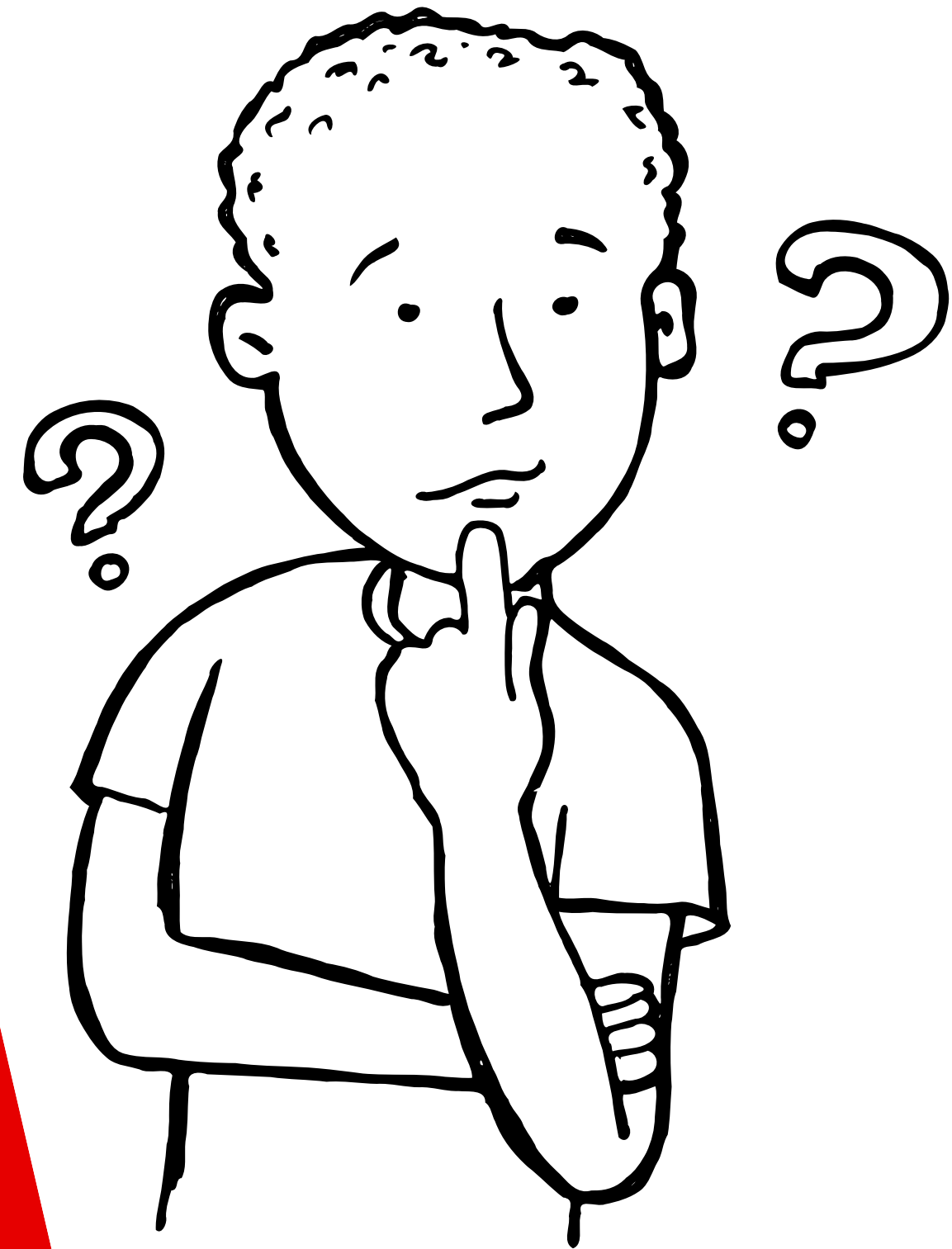
- This is fine, but your puppy would have to remain on a lead. This will all be assessed during your application process to see if it is viable.



Autism  
Assistance  
Dogs  
Ireland

# WE DON'T HAVE A CAR. ARE WE STILL ELIGIBLE?

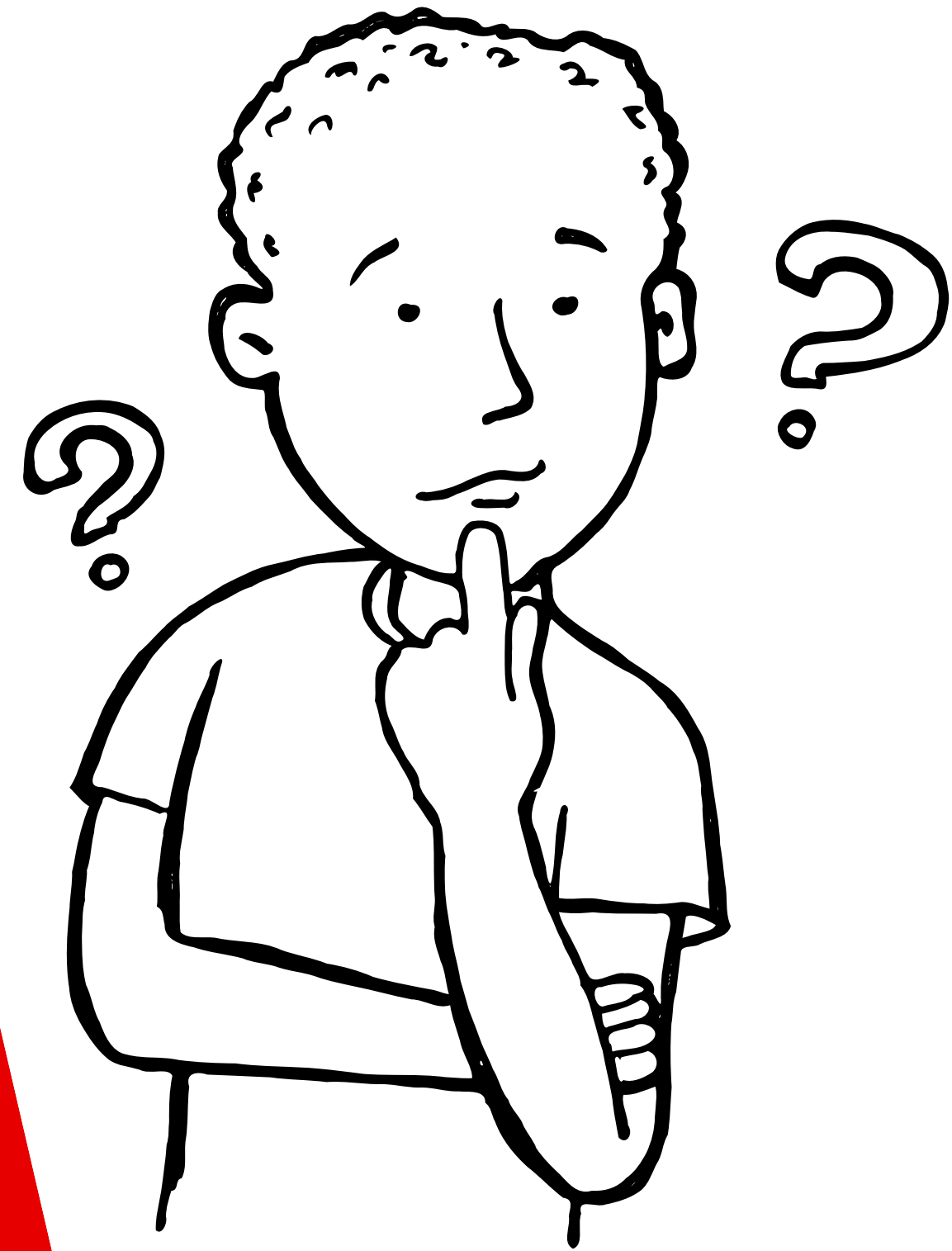
- It is one of the requirements that you have a car and this is more about getting the pup used to travelling in the car. If you were interested in short term boarding this might suit better.



Autism  
Assistance  
Dogs  
Ireland

# MY CHILDREN ARE YOUNG, COULD I STILL FOSTER A PUP?

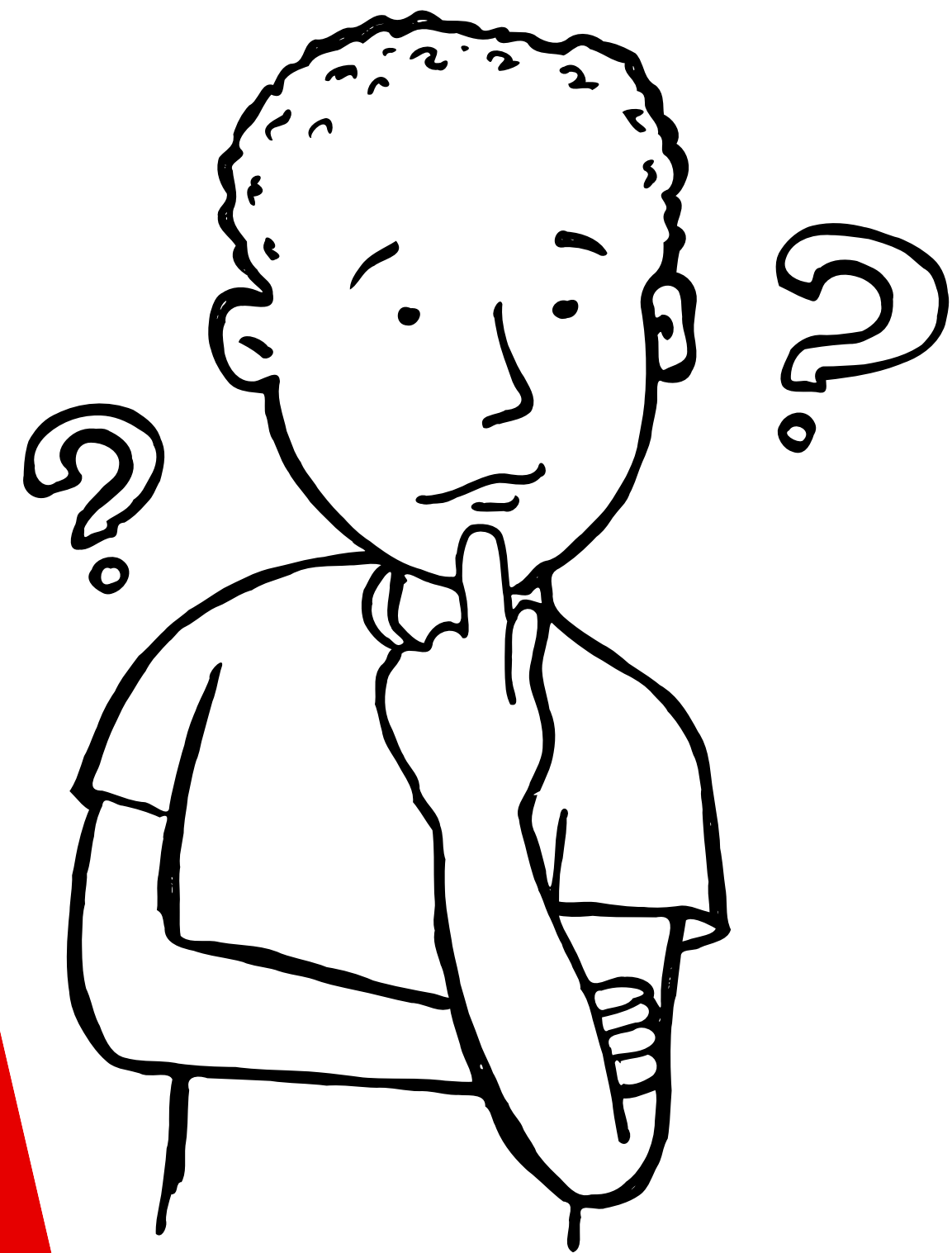
- It is great for our puppies to grow up around children. Please be aware, puppies are a lot of work, it is like having a toddler! They will go through phases of chewing and puppy biting. This can be hard to manage for young children. If you do have young children and you are interested in applying, please do - we will assess this on a case by case basis.



Autism  
Assistance  
Dogs  
Ireland

# I DON'T LIVE IN DUBLIN OR MUNSTER... BUT I STILL WANT TO FOSTER?

- We are currently operating only in Dublin and Munster, but we hope to expand our operations in the future. If you live outside the two regions but are willing to travel, please apply and we will assess your situation.



Autism  
Assistance  
Dogs  
Ireland



- THANK YOU FOR TAKING THE TIME TO READ THE INFORMATION REQUIRED FOR PUPPY FOSTERING - PLEASE ONLY FILL OUT THE APPLICATION FORM IF YOU CAN FULLY COMMIT TO THE ROLE
- WHAT HAPPENS NEXT:
  - WE WILL REVIEW YOUR APPLICATION FORM AND WILL BE IN TOUCH TO ORGANISE A PHONE ASSESSMENT - AT THE ASSESSMENT WE WILL BE ABLE TO GIVE YOU MORE INFORMATION ON THE ROLE AND HOW IT WILL FIT WITH YOUR LIFESTYLE AND ANSWER ANY FURTHER QUESTIONS YOU HAVE.
  - ONCE YOU ARE ACCEPTED FOR PUPPY FOSTERING YOU COULD BE OFFERED A PUPPY STRAIGHT AWAY OR PLACED ON A WAITING LIST FOR A SHORT WHILE UNTIL A PUPPY BECOMES AVAILABLE.

**FOR MORE VOLUNTEERING OPPORTUNITIES PLEASE CONTINUE READING**



## OTHER VOLUNTEER OPPORTUNITIES: VOLUNTEER DRIVERS - DUBLIN AND MUNSTER

- We are recruiting for volunteer drivers to transport puppies throughout either the Dublin or Munster areas.
- This role would involve collecting a puppy at a given location and transporting them to another location. Everything the puppy needs for the trip will be provided.
- For more information and applying please:

[CLICK HERE](#)



# LONG TERM FOSTERING VS SHORT TERM FOSTERING

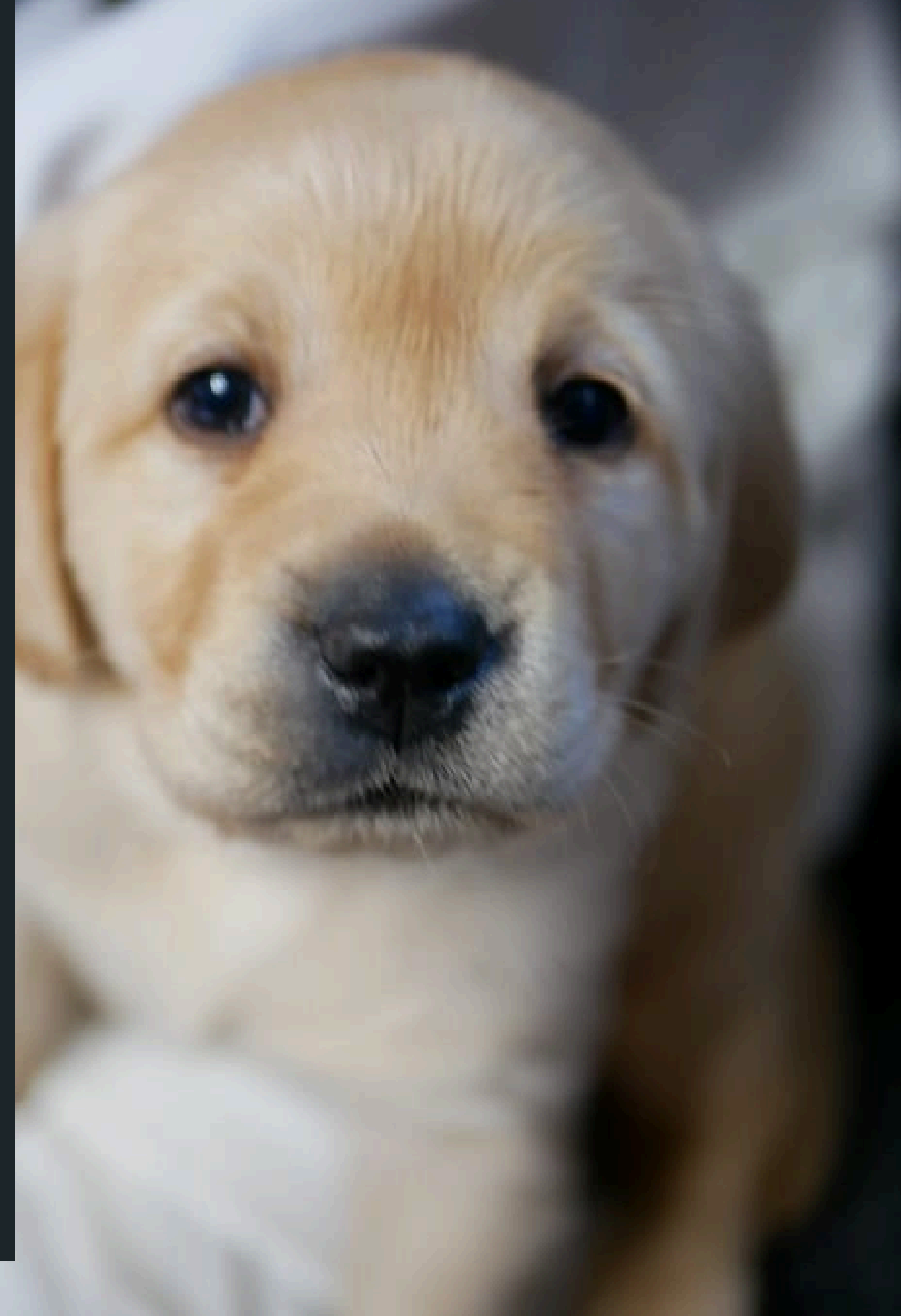


Autism  
Assistance  
Dogs  
Ireland



# HOW DOES TEMPORARY/SHORT TERM FOSTERING WORK?

- The puppy's fosterer will contact you to arrange drop off and collection of the puppy.
- They will bring everything the puppy needs for their stay.
- They will provide you with information on the puppy's daily routine and care.
- If there is a medical emergency please go to the nearest vet to you at the time and ring your puppy supervisor on the way to let them know what has happened and to arrange for payment.
- The puppy's training jacket will **not** be provided. When the puppy is with you they are on their holidays and so will not be working in shops etc.
- This means that the puppy **WILL NOT HAVE PUBLIC ACCESS** and can only be taken to places suitable for pet dogs.



## HOW DOES LONG TERM PUPPY FOSTERING WORK AND WHAT IS INVOLVED?

- You will be the full time carer of the puppy for a minimum of 6 months.
- You will need to be available during working hours (Mon - Fri) to meet with the puppy supervisor for 1 hour every fortnight for a puppy class or a training walk, the locations may vary but will generally be no longer than a 30minute drive from you. These meetups can be scheduled in advance.
- The puppy supervisor will work with you to help reduce problem behaviours and to help the puppy meet their training milestones.
- You will be expected to schedule and bring the puppy to their vet visits.
- All costs will be covered by the charity (equipment, food, vet bills etc.)
- You will need to follow the rules, a puppy who does not have clear boundaries from the start will be difficult to manage when they are a large 5 month old bundle of energy.
- The puppy will have a training jacket which gives them public access.



# ABOUT OUR CHARITY



**Autism  
Assistance  
Dogs  
Ireland**



# ABOUT US...



**10-15**

ENQUIRIES weekly



**2yrs**

to train an Autism Assistance Dog.



**90%**

of our FUNDS come from the public



**€0**

we DO NOT CHARGE for our ADs

# AN AUTISM ASSISTANCE DOG IS TRAINED TO...

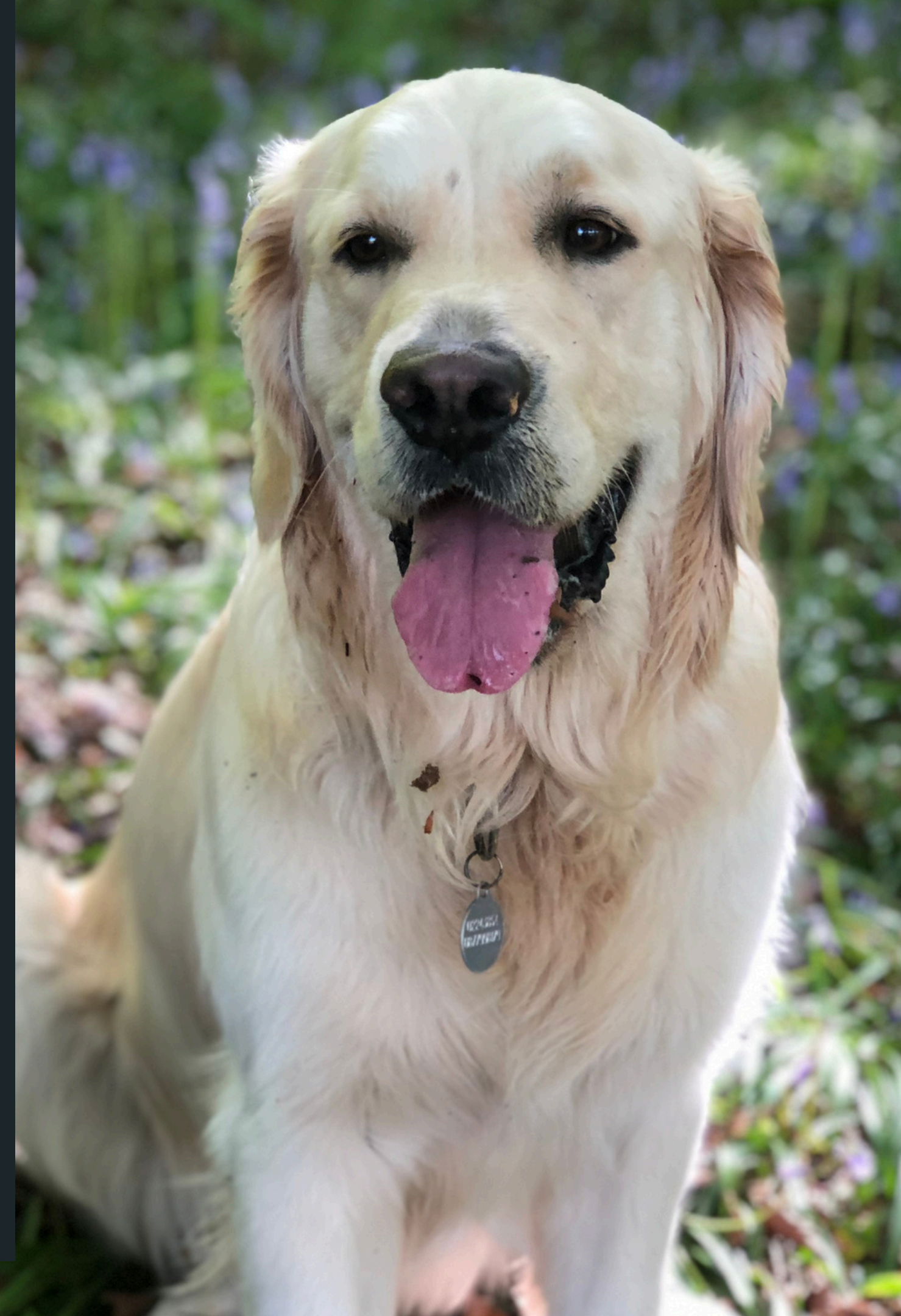
- Stop bolting or eloping
- Reduce anxiety in public
- Provide more understanding within the general public





# AN AUTISM ASSISTANCE DOG IS NOT TRAINED TO...

- Work 24/7
- Follow the child or alert if they escape
- Interrupt behaviours
- Work with more than one child



# BREEDING

- We breed all our own puppies.
- We use Labradors, Golden Retrievers and Labrador cross Golden Retrievers
- Puppies' parents are health & temperament tested
- Our litters stay for the first 8 weeks with their mother and begin early training while still in the nest



## FROM 8 WEEKS OLD...

- The puppies are added to the puppy programme.
- They live with volunteer foster families.
- We focus on socialising the puppies and teaching them basic training.
- They learn good social behaviour, loose leash walking and recall.
- Puppy Supervisors host puppy classes & arrange training walks.



# FORMAL TRAINING

- Up to 20 weeks of 1-to-1 training

## Trained & Assessed on...

- Ignoring distractions
- Stopping and waiting at kerbs
- Walking on a loose lead
- Responding to commands
- Obedience
- Social behaviour
- Travelling on transport
- Attachment walks



# OUR WAITING LIST

2021: 30 places, filled in 2 minutes

2022: 35 places

2023: 45 places

- A decision to open the waiting list around June/July every year
- 12-18 month waiting period
- First come first serve basis **without discrimination.**
- Potential applicants must first attend an information session
- Applicants that **need** and **will benefit** from an AD will be successful

